



HKT SMART LIVING AWARDS 2019

Designing the Future

學生組
作品參考文件

Student
Submission Reference Deck

主辦單位 Organizers

HKT® | **Smart Living™**

參加資格 Eligibility

任何就讀在香港註冊的全日制或兼讀制課程的學生及 2017 和 2018 年度的畢業生，均可以個人或團隊名義參加學生組，每個參賽單位最多四人。

Any student enrolled in a full-time or part-time program registered in Hong Kong, including graduates from 2017 and 2018, is eligible to enter the Student category in his/her name, or as part of a team comprising a maximum of four eligible members.

設計題目 Design Theme

Live Smart. Live Well.

背景

現代人對追求健康生活的意識有所提升；不過，繁忙的都市生活令不少人難以建立健康的生活（如定時而且均衡的飲食習慣、充足的作息及適量的運動）。而智能家居的設計及發展可令都市人生活更加便捷，而且更易擁有健康生活。

Background

People today are seeking to pursue healthy lifestyles more than ever before, but it is a formidable challenge in the hustle and bustle of everyday city life. A balanced diet, sufficient sleep and physical exercise, for example, are difficult to achieve on a daily basis. Smart home design, however, comes to the rescue by facilitating healthier and more efficient lifestyles.

參賽單位必須應用室內設計及智能家居概念，為家庭設計有利健康的生活空間，讓每位家庭成員均可享受優質生活。**設計要求如下：**

Entrants must incorporate interior design and smart living concepts, and design a dwelling unit for a household, such that each family member enjoys a healthier lifestyle. **Requirements are as follows:**

空間

6 米 x 6 米 x 2.5 米高

Footprint

6m x 6m x 2.5m H

空間須包括客廳、飯廳、廚房、廁所及充足的睡眠空間

The space must include dining, living, kitchen, washroom and sufficient sleeping space

對預算、家具和材料選用均沒有限制

No constraint on budget, furniture or materials

對家庭人數無限制，但請為家庭成員設定身分，如性別、年齡及職業等

Please identify family members in terms of gender, age range, occupation and so on (no limitation on household size)

評審準則 Judging Criteria

設計作品將透過以下準則來評審：

Designs will be judged according to the following criteria:



室內設計概念 Interior Design Concept

30%

創意性 Creativity

展現設計師其創新意念及獨特性。

Entrant's demonstration of innovation and uniqueness.

視覺及空間設計 Visual & Spatial Design

將視覺藝術融合室內設計，
打造具空間感的家居。

Combination of visual art and interior design to provide a spacious living environment.

智能家居概念 Smart Living Concept

70%

智能科技應用 Application of Technologies

在家居設計中融合創新科技及智能化元素。

Incorporation of innovative technologies and intelligent elements in a home design.

功能性 Functionality

善用家居空間角落，設計切合住戶需求，
同時達致舒適、便利及效率的生活環境。

Appropriate use of living space to meet the needs of a household and create a comfortable and convenient living environment.

作品要求

Submission Requirement

參加單位須提交一份 6 - 10 頁圖文並茂的設計方案，以 PDF 格式檔案提交（檔案大小上限為 20 MB），內容必須包括：

Entrants are required to submit a Design Proposal of 6 – 10 pages comprising illustrations, text and pictures. The Design Proposal should be in PDF format (20MB limit) to include:

- | | | |
|---|---|--------------------------|
| 1 | 設計作品簡介
Design summary | 1頁
1 page |
| 2 | 2D 平面圖 / 剖面圖
2D graphics of floor plan/ section | 最少2頁
At least 2 pages |
| 3 | 3D 立體圖 / 透視圖
3D graphics of isometric view/
perspective | 最少2頁
At least 2 pages |
| 4 | <p>一篇文字描述以解釋應用於該設計作品的室內設計概念和智能家居概念，以及該設計如何滿足一家需要。</p> <p>文字描述可以全中文（建議不多於 300 字）或全英文（建議不多於 500 字）提交。</p> <p>A passage to describe and explain how interior design and smart living concepts have been applied and how the design meets the household's needs.</p> <p>Submissions will be accepted in Chinese (300-word limit) or English (500-word limit).</p> | 1頁
1 page |
| 5 | <p>任何可加強展現視覺效果的内容</p> <p>Any content that enhances the visual effect</p> | 0-4頁
0- 4 pages |

作品要求

Submission Requirement

參加單位可提交長度不超過 2 分鐘的影片。請將影片上傳到 YouTube，並在網上申請表格上提交連結。

Entrants can also submit a video not exceeding 2 minutes in length. Please upload the video to YouTube and write the link on the Online Application Form.

參加單位須提交學生證副本、畢業證書或相關證明，以核實身份。

Entrants must submit a copy of student ID card, graduation certificate or other proof to verify identity.

年齡未滿 18 歲的參加者，另須提交由家長或監護人簽署的同意書。

你可以到 Smart Living 網站下家長同意書。

Entrants aged below 18 are required to submit a consent letter signed by parents or guardian. You can download the Parent Consent Letter from the Smart Living webpage.

每個參加單位只可以提交一個設計作品；而每位學生只可參加一次。

Each participating unit can submit only one design project, and each participant can enter once only.

在網上提交申請表格後，參加單位可將設計作品電郵至

SLAwards@smartliving.hkt.com 提交設計作品；但參加單位必須於 2019 年 5 月 10 日或以前提交申請及作品，逾期將不獲接納。

After submitting an application form online, entrants can submit their design materials by email (SLAwards@smartliving.hkt.com), but are required to do so on or before May 10, 2019. Late applications or submissions will not be accepted.

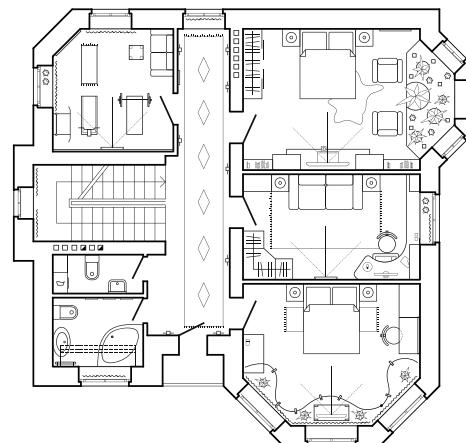
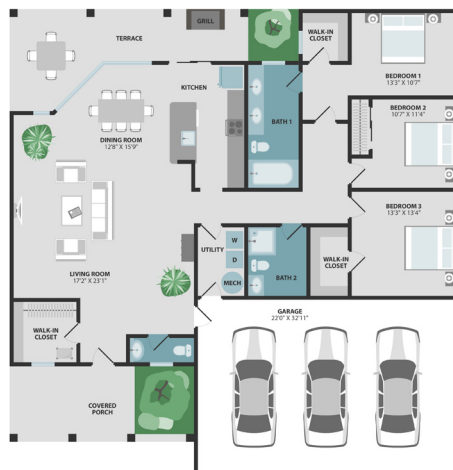
入圍名單會於 2019 年 5 月公佈，入圍單位將被安排於 2019 年 6 月內進行作品匯報，評判團會按參加單位所提交的設計作品、演說及簡報內容等各方面進行評分。

Finalists will be announced in May 2019 and will be required to make an "Elevator Pitch" (Design Presentation) in June 2019. The judging panel will rate each entry according to design, speech and presentation content.

作品要求 Submission Requirement

2D 平面圖 / 剖面圖參考

References to 2D graphics of floor plan/ section



作品要求 Submission Requirement

3D 立體圖 / 透視圖參考

References to 3D graphics of isometric view/perspective

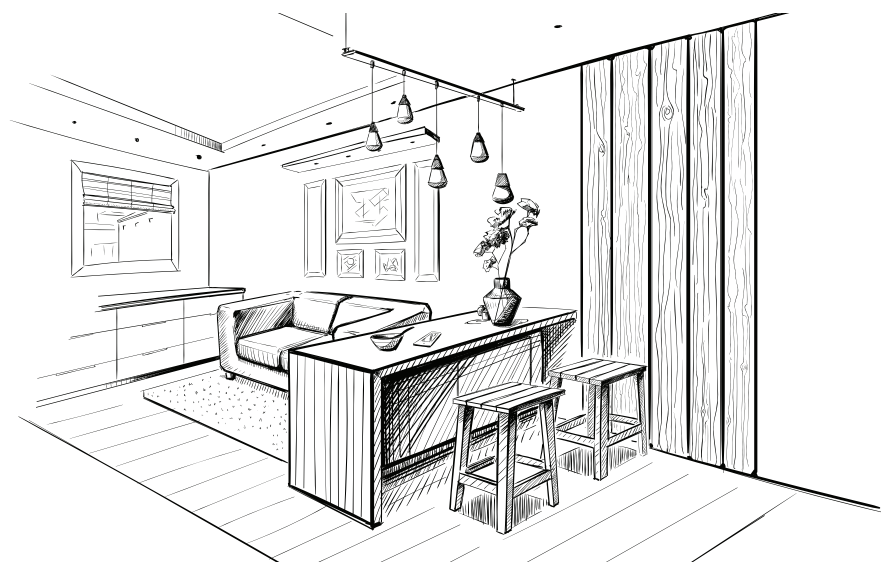


作品要求

Submission Requirement

3D 立體圖 / 透視圖參考

References to 3D graphics of isometric view/perspective



活動流程 Timeline

2019年3月1日 - 2019年5月10日
March 1 - May 10, 2019

提交作品
Open for Entries

2019 年 6 月
June 2019

設計作品匯報
Elevator Pitch
(Design Presentation)

2019 年 6 月
June 2019

網上投票
Online Voting

2019 年 9 月
September 2019

頒獎典禮
Presentation Ceremony

聯絡我們 Contact Us

如欲查詢有關此獎項事宜，請於辦公時間內（星期一至星期五上午 9 時 30 分至下午 6 時）透過以下方式聯絡我們：

If you have any inquiries, please contact us during office hours (Monday to Friday from 9:30am to 6pm) by the following means:

電郵 Email

SLAwards@smartliving.hkt.com

電話 Phone

2883 3894 (陳小姐 Ms Chan)

2888 6022 (黎小姐 Ms Lai)

詳情請瀏覽 For more details, please visit
<https://smartliving.hkt.com/awards/>

